

Making your health & life a priority one visit at a time.

The Palliative Care Community Team is a multi-disciplinary team providing care and support to palliative residents of Haliburton County. Clients who have been diagnosed with a life limiting condition can get connected with the support and services they need. Support to patients and their families can begin as soon as possible to support them in their end of life journey.

Haliburton Highlands Health Services
www.hhhs.ca

Tel: 705 457 1392 Ext 2930

YOUR Palliative Care Community Team (P.C.C.T.)

In partnership with the Haliburton Highlands Health Services, the Haliburton Highlands Family Health Team, The Central East Community Care Access Center, and the Peterborough Hospice Palliative Pain and Symptom Management Consultation Service. This is your care team working together with you.



Community Support Services
7185 Gelert Rd, PO Box 956
Haliburton, ON
K0M 1S0

Phone: 705 457 1392 Ext 2930

Palliative Care Community Team Community Support Services Division



Leaders in Innovative Rural Health Care



Haliburton Highlands Health Services
www.hhhs.ca

Tel: 705 457 1392 Ext 2930

Patient Supports Available

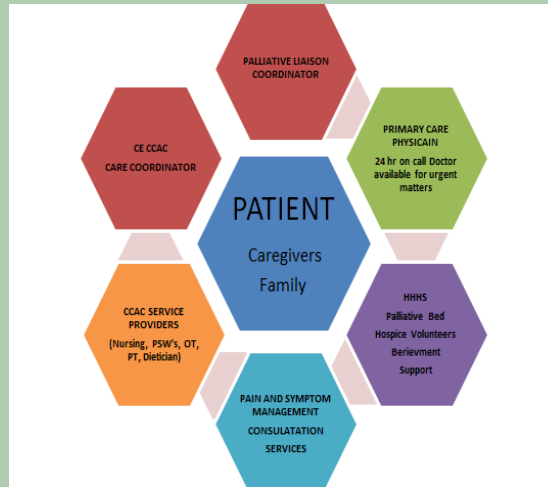
- Physician access - 24 hours a day/7 days a week
- Volunteer visiting
- Coordinated support to Health Services
- Access to pain & symptom management
- Client centered, Multi-disciplinary case coordination



"My mom drove the show, her wishes, all the way. The team was perfectly in tune with other aspects of care. We were always met with patience and understanding by all members of the team. We had immediate response from the coordinator as well as team members. We could not have asked for better support."

Judy Johnson

Your Circle of Care



Our Palliative Care Community Team (P.C.C.T.) Circle of Care begins with your first phone call to Community Support Services.

From our initial contact through the Care continuum you can be rest assured that you or your loved one's needs are continually monitored and addressed.

Your Palliative Care Liaison

Our highly skilled, professional & compassionate Palliative Care Liaison becomes your care partner & link to the health care team to ensure implementation of:

- Shared care plans
- Assessment
- Referral
- Access to palliative care, grief, bereavement & support services



705-457-1392 Ext. 2930

Let the **Palliative Care Community Team** support you and your loved ones through your end of life journey. Our caring and compassionate team of medical professionals can assist you to ensure all of your needs are met and your family supported through this time of life.